



LoadRunner

THE INDUSTRY-STANDARD
LOAD TESTING PRODUCT

How can you be sure your mission-critical applications will have acceptable performance and scalability as defined by your business requirements? How can you minimize the risk of slow performance or catastrophic failure when deploying a multi-user system? How can you determine at what point an application may suffer performance degradation or fail altogether?

Enterprise applications rely on a multitude of technologies, components, platforms, servers and tiers. They are inherently complex and pose a huge risk that could lead to dissatisfied users and lost revenues if not tested prior to deployment. Mercury Interactive's LoadRunner® is the industry-standard load testing product for predicting system behavior and performance. LoadRunner enables organizations to:

- Obtain an accurate picture of end-to-end system performance
- Verify that new or upgraded applications meet specified performance requirements
- Identify and eliminate performance bottlenecks during the development lifecycle

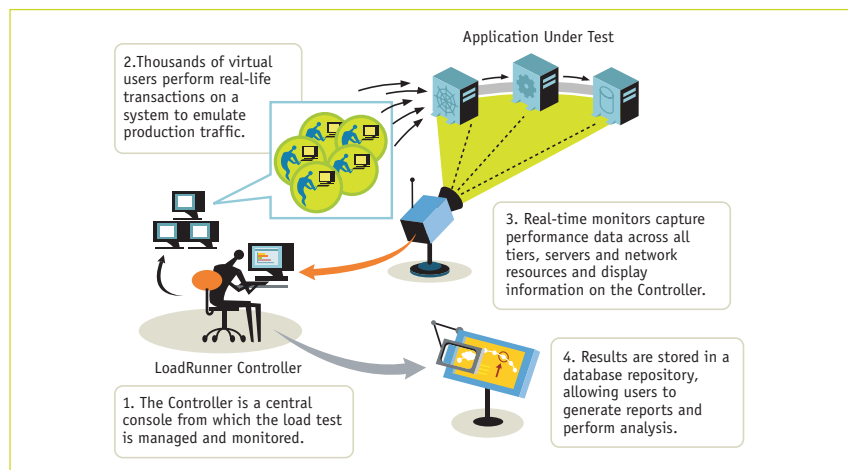
HOW LOADRUNNER WORKS

Utilizing limited hardware resources, LoadRunner emulates hundreds or thousands of concurrent users to put the application through the rigors of real-life user loads. IT groups can stress an application from end-to-end across all architectural tiers—applying consistent, measurable and

HIGHLIGHTS

- **Supports the most common enterprise environments.** LoadRunner offers comprehensive support for the most common protocols and technologies—including ERP/CRM, Web, J2EE, XML, .NET, wireless and streaming media—allowing IT groups to use a single product for load and performance testing of all enterprise applications.
- **Uncovers bottlenecks in complex IT infrastructures.** LoadRunner's real-time performance monitors provide detailed metrics across all architectural tiers, measuring response times, network delays and server and application performance to help quickly identify and resolve bottlenecks before deployment.
- **Helps ensure that performance requirements will be met.** With LoadRunner, organizations can utilize sophisticated correlation, analysis and reporting capabilities to help improve application performance, reducing the risk that heavy traffic will degrade performance beyond acceptable limits.
- **Leverages investments in other solutions.** LoadRunner fully integrates with Mercury Interactive's suite of testing products, including WinRunner® and QuickTest® Professional for functional testing and TestDirector® for global test management. Moreover, companies can reuse LoadRunner test scripts with ActiveTune™ for tuning in production and with Topaz for post-deployment application performance management.

LoadRunner is the industry-standard load testing product.



repeatable loads—then use the data to identify scalability issues before they impact end users.

LoadRunner measures the response times of key business processes and transactions, uncovering end-to-end performance problems. By employing real-time performance monitors that capture and display performance data from every tier, server and component, and a sophisticated analysis module, LoadRunner allows teams to drill down to determine the specific source of bottlenecks within the architecture.

LoadRunner supports the widest range of enterprise environments and is the only load testing product to be customized and certified to work

with ERP/CRM applications from PeopleSoft, Oracle, SAP and Siebel. LoadRunner also integrates with the leading J2EE development environments and with Microsoft's Visual Studio .NET to dramatically accelerate the testing of applications built using these tools.

Furthermore, LoadRunner integrates fully with Mercury Interactive's other testing products, including WinRunner and QuickTest Professional for functional testing and TestDirector for global test management. In addition, LoadRunner scripts can be reused with the ActiveTune service to tune systems in production and with the Topaz platform to monitor application performance, availability and service levels after deployment.

SUPPORTED ENVIRONMENTS

LoadRunner supports a wide array of enterprise environments and technologies, including the following:

PROTOCOLS

Web

Citrix ICA
HTTP(S)
i-mode
SOAP
Streaming
WAP
Winsock
XML

Databases

IBM DB2
Microsoft SQL Server
Oracle
Sybase

ERP/CRM

Oracle
PeopleSoft
SAP
Siebel

Middleware

BEA Tuxedo
COM/DCOM
EJBs
Jacada
MQSeries
RMI

PERFORMANCE MONITORS

Web Application Server Monitors

ATG Dynamo
BEA WebLogic
IBM WebSphere
iPlanet App Server
Oracle 9iAS

Web Server Monitors

Apache
iPlanet (NES)
Microsoft IIS

Middleware Monitors

BEA Tuxedo
EJBs
Sitraka
JMonitor/JProbe

Database Monitors

IBM DB2
Microsoft SQL Server
Oracle
Sybase

ERP/CRM

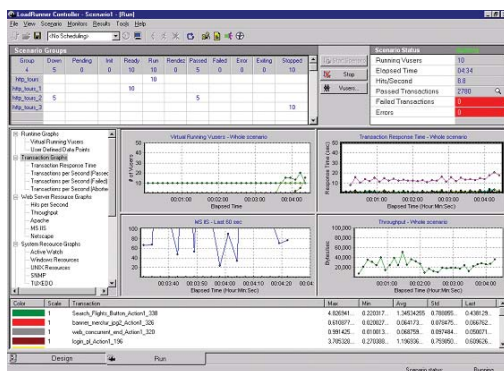
SAP R/3

Network Monitors

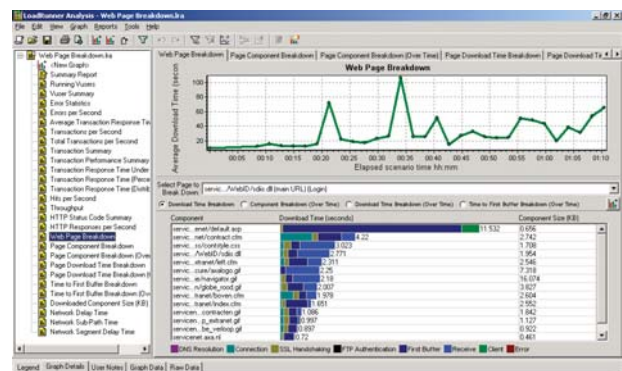
Network Delay
SNMP

OS Monitors

Linux
UNIX
Windows NT, 2000, XP



LoadRunner's Controller provides the central point for designing and running load scenarios.



LoadRunner's Web Transaction Breakdown monitor splits end-to-end transaction response times for the client, network and server.

For more information on LoadRunner and a complete list of supported environments:
www.mercuryinteractive.com/products/loadrunner

MERCURY INTERACTIVE CORPORATE HEADQUARTERS

1325 Borregas Avenue Sunnyvale, CA 94089 tel: 408-822-5200, 800-837-8911 fax: 408-822-5300

www.mercuryinteractive.com